



INFRAFRONTIER
mouse disease models

Mouse Models for Global COVID-19 Research

INFRAFRONTIER is the European Research Infrastructure (RI) focused on developing, phenotyping, and archiving mouse models to investigate the genetic causes of human health disorders.

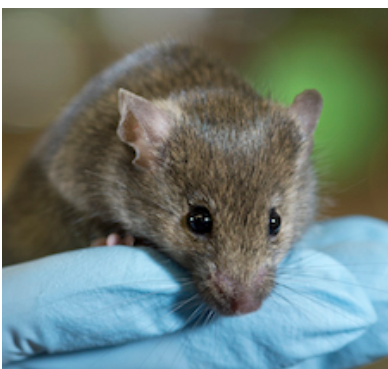
We actively support preclinical COVID-19 research by providing access to cutting-edge services, extensive archives and world-leading expertise in using mouse models to develop therapeutics and study SARS-CoV-2 pathology.

The complete list of our current COVID-19 resources and services can be found [here](#).

INFRAFRONTIER Resources and Services

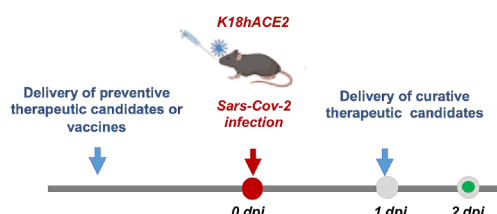
Mouse Mutant Archive

INFRAFRONTIER hosts and manages the **European Mouse Mutant Archive (EMMA)** – the largest mouse repository in Europe. Among its 7,700 strains there are **more than 30 SARS-CoV-2 and related-coronaviridae** associated mouse strains available for distribution.



Novel COVID-19 Therapeutics Pipeline

In 2021, INFRAFRONTIER offers a state-of-the-art preclinical therapeutics pipeline to the global research community free-of-charge via a competitive open call. This pipeline incorporates the virus-sensitive mouse model **K18-hACE2**, high-dimensional **immune-monitoring capacities** and **BioSafety Level 3 lab capacities** to assess innovative therapeutics and vaccine candidates.



Specialised Mouse Models for COVID-19

INFRAFRONTIER partners are developing novel specialised mouse models that **express human-ACE2 receptors** systemically and in different cell types to study the pathology of **SARS-CoV-2** and its variants.